

EnAct, Inc.



EnAct
community action

2016 Annual Report



PROGRAMS

- EMERGENCY ASSISTANCE
- EDUCATION ASSISTANCE
- WORKFORCE DEVELOPMENT
- BUDGET COUNSELING
- CASE MANAGEMENT
- NUTRITIONAL COUNSELING
- FOOD PANTRIES
- BABY PANTRIES
- NON-EMERGENCY MEDICAL TRANSPORTATION
- RIGHT FROM THE START
 - Pre-natal to age 1 education & support
- SENIOR SERVICES
 - Comforts of Home in-home care
 - Personal Care in-home care
- GROUP WORK CAMPS



Mission Statement

EnAct Community Action will focus on the unique social planning responsibility of community action agencies by identifying the causes of poverty in the communities we serve, developing solutions, building active partnerships, and lifting low-income individuals and families to their fullest potential.

Community Action Agencies

Community Action Agencies are nonprofit or public organizations that were created by the federal government in 1964 to combat poverty in geographically designated areas. Status as a Community Action Agency is the result of an explicit designation by local or state government. A Community Action Agency has a tripartite board structure that is designed to promote the participation of the entire community in the reduction or elimination of poverty. Community Action Agencies seek to involve the community, including elected public officials, private sector representatives, and especially low-income residents in assessing local needs and attacking the causes and conditions of poverty.

Who We Are

EnAct Community Action is one of 16 West Virginia Governor's designated Community Action Agencies offering a wide variety of services to the low income residents of Boone, Clay, Fayette, Kanawha, and Putnam counties.

EnAct Community Action has 7 offices located throughout its 5 county service area. With over 51 employees and 14 vehicles, EnAct Community Action served over 3,000 individuals and 5,000 families in 2016.

December 31, 2016

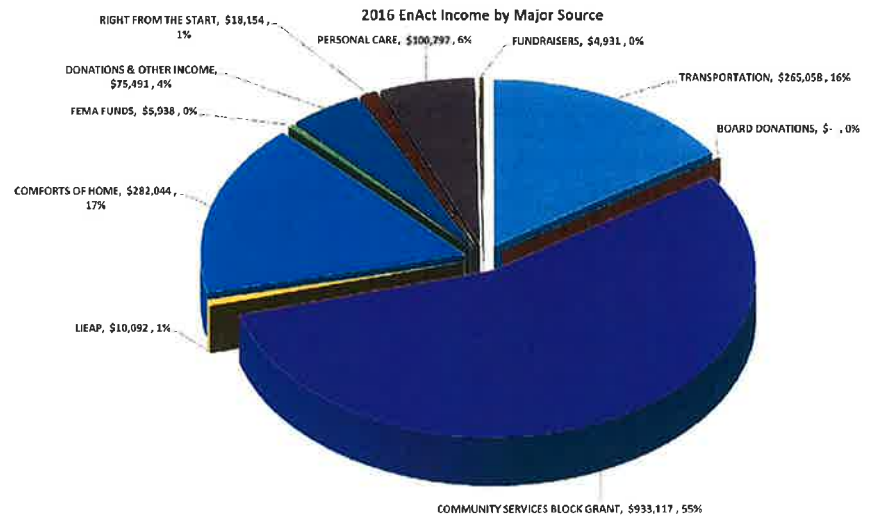
PROFIT & LOSS

| | |
|---------------|----------------|
| Total Income | \$2,214,323.75 |
| Total Expense | \$2,211,661.04 |
| Net Income | \$ 2,662.71 |

BALANCE SHEET

| | |
|---------------------------------|---------------|
| Total Current Assets | \$ 112,840.10 |
| Total Fixed Assets | \$ 97,289.65 |
| Total Other Assets | \$ 6,105.00 |
| Net Income | \$216,234.75 |
| Total Accounts Payable | \$ 83,830.06 |
| Total Credit Cards | \$ 5,342.72 |
| Total Other Current Liabilities | \$ 96,830.18 |
| Total Liabilities | \$221,332.93 |
| Total Equity | (\$ 5,098.18) |
| Total Liabilities & Equity | \$216,234.75 |

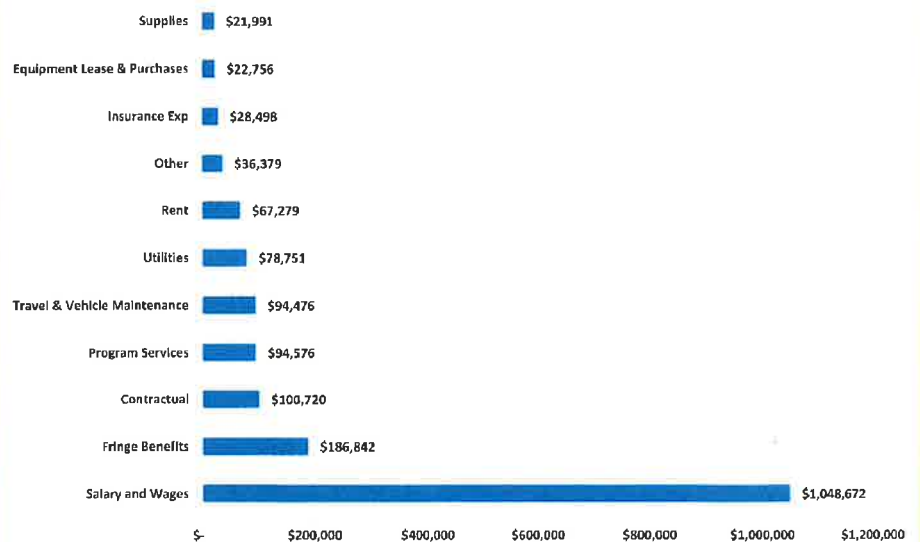
Complete set of Financial Statements are available on our website or upon request.



2016 Revenue Sources

EnAct Community Action derives its revenue from a variety of sources. The main revenue source is the Community Services Block Grant (CSBG) provided from the West Virginia Office of Economic Development. All other EnAct Community Action programs are reimbursement based and/or grant supported.

2016 EnAct Expense by Major Category



2016 Expenses

EnAct Community Action's major expense categories consists of supplies, insurance expense, equipment lease & purchases, utilities, rent, travel & vehicle maintenance, wages and fringe benefits, contractual, and program services.

Jim Pauley
Chair
Representing Private, Kanawha County

David "Jake" Warren
Vice Chair
Representing Private, Boone County

Dwana Murphy
Treasurer
Representing Private, Clay County

Jeremy Young
Secretary
Representing Public, Putnam County

Rick Ferris
Representing Public, Kanawha County

Gina Witt
Representing Low-Income, Putnam County

Judson Wallace
Representing Public, Fayette County

Connie Keiffer
Representing Low-Income, Fayette County

Kenneth Hale
Representing Low-Income, Kanawha County

Brent Pauley
Chief Executive Officer



EnAct, Inc.

1701 5th Avenue, Suite 7
Charleston, WV 25387

(304) 414-4475 office
(304) 414-4476 fax
www.EnActWV.org

